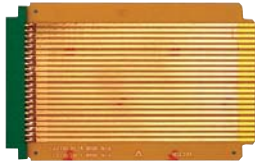


## Card Edge Extenders

Vectorbord® extender cards provide convenient access to functioning circuit boards for testing. Engineered for quality, Vectorbord® extenders include low insertion force and gold-plated contacts for reliable connection and minimum wear on board.



**3690**  
 Extension length 6.5"  
 22 contacts per side on 0.156" centers  
 Fits Vector Series 12 or 13 Subracks  
 Current rating: 5 amps at 10° F rise  
 Voltage rating: 200 RMS or 300 VDC  
 Trace Width: 0.092"  
 Capacitance: Between traces, 9pf  
 Length of trace: 4.5pf



**3690-6**  
 Extension length 11.0"  
 22 contacts per side on 0.156" centers  
 Fits Vector Series 14 Subracks  
 Current rating: 5 amps at 10 degrees F rise  
 Voltage rating: 200 RMS or 300 VDC  
 Trace Width: 0.092"  
 Capacitance: Between traces, 15pf  
 Length of trace: 8.0pf



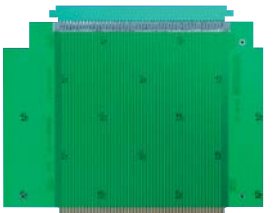
**3690-8**  
 Extension length: 5.5"  
 22 contacts per side on 0.1" centers  
 Fits Vector Series 12 or 13 Subracks  
 Current rating: 5 amps at 10 degrees F rise  
 Voltage rating: 200 RMS or 300 VDC  
 Trace Width: 0.062"  
 Capacitance: Between traces, 9pf  
 Length of trace: 3.2pf



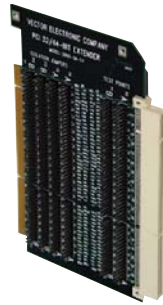
**3690-16**  
 Extension length: 6.5"  
 28 contacts per side on 0.125" centers  
 Fits Vector Series 12 or 13 Subracks  
 Also fits STD bus specifications  
 Current rating: 5 amps at 10 degrees F rise  
 Voltage rating: 200 RMS or 300 VDC  
 Trace Width: 0.062"  
 Capacitance: Between traces, 9pf  
 Length of trace: 4.5pf



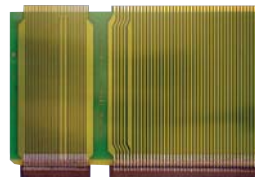
**3690-2**  
 Extension length: 11.0"  
 36 contacts per side on 0.10" centers  
 Fits Vector Series 14 Subracks  
 Current rating: 5 amps at 10 degrees F rise  
 Voltage rating: 200 RMS or 300 VDC  
 Trace Width: 0.062"  
 Capacitance: Between traces, 18pf  
 Length of trace: 6.3pf



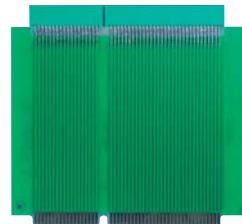
**3690-12 S100**  
 Extension length: 7.5"  
 50 contacts per side on 0.125" centers  
 Double sided controlled impedance board  
 High reliability, gold plated connector (mounted)  
 Contact fingers on card are nickel/gold-plated  
 2 oz. copper clad, flame retardant epoxy glass composite material - 94V-O-UL classification  
 Current rating: 5 amps at 10 degrees F rise  
 Voltage rating: 200 RMS or 300 VDC



**3690-34-3V or 3690-34-5V PCI**  
 Extender card for PCI expansion card uses the "universal" pattern for 32/64 bits in the "short-card" size  
 Extenders are size and pin compatible with both 5.0V & 3.3V versions respectively  
 Length: 6.875" (174.6mm)  
 Contacts: 120 Ni/Gold, 0.050" centers (2x60 tabs removed in two areas for keying space)  
 Height: 4.2" (106.7mm)  
 Layers: 4 Power layers may use 3.3V or 5.0V  
 Decoupling Caps: Installed. .1mf, 20%  
 Mounting Bracket: Included



**3690-18 Multibus**  
 Extension length: 7.65"  
 Double sided controlled impedance board  
 30/43 contacts each side on 0.100" centers  
 Reliable gold plated connector mounted on top and connected to circuit traces  
 Nickel/gold-plated fingers on extender card  
 Current rating: 5 amps at 10 degrees F rise  
 Voltage rating: 200 RMS or 300 VDC  
 Material: FR4, 2 oz copper clad  
 Also functions as cable terminator or experimental plugboard



**3690-26 IBM AT-ISA**  
 Extension length: 5.6"  
 Double sided controlled impedance board  
 18/31 contacts each side on 0.100" centers  
 Current rating: 5 amps at 10 degrees F rise  
 Voltage rating: 200 RMS or 300 VDC  
 Test points for mounting probes on each connector line  
 Also available 3690-26-1 multilayer extender with decoupling capacitors



**3690-22 IBM PC, XT**  
 Extension length: 5.7"  
 Double sided controlled impedance board  
 31 contacts each side on 0.100" centers  
 Test points for mounting probes on each connector line  
 Current rating: 5 amps at 10 degrees F rise  
 Voltage rating: 200 RMS or 300 VDC  
 Flame retardant laminate construction, 2 oz copper clad

Extenders

For a list of mating Vector Edge Connectors please see pages 66 and 67.